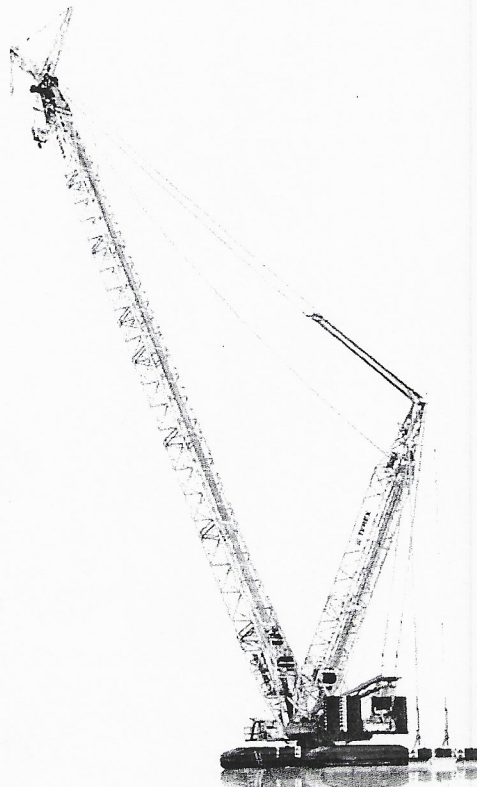




**TEREX®**

# KRANPASS

CRANE CERTIFICATION LOG  
CARNET DE CERTIFICATION



**Krantyp:**

**CC 2800-1**

Type of crane:  
Type de grue:

**Bau-Nr:**

**62387**

*V 1276*

Serial No:  
N° de serie:

**Terex-Demag GmbH**

**Dinglerstr. 24  
66482 Zweibrücken**

+49 (0) 6332 830  
<http://cranes.terex.com>

**TEREX®**

# Inhaltsverzeichnis

Table of contents  
Table de matières

**Typ:****CC 2800-1**Type:  
Type:**Baunummer:****62387**Serial No:  
N° de séries:**Spezifikation Fahrzeugkran**Specification Mobile crane  
Spécification grue mobile

0

**Blatt: 1 - 3**Page:  
Page:**Spezifikation Tragmittel**Specification for lifting tackle  
Spécification des accessoires d'élingage**Blatt: 4 - 5**Page:  
Page:**Spezifikation Arbeitsbereich**Specification working range  
Spécification de portée**Blatt: 6 - 9**Page:  
Page:**Spezifikation Tragfähigkeitstabellen**Specification for duty charts  
Spécification des tableaux des charges**Blatt: 10 - 39**Page:  
Page:**Konformitätserklärung**Certificate of conformity  
Certificat de conformité**Blatt: 40**Page:  
Page:**Anhang**Annex  
Annexe**Blatt: 41 - 56****Prüfnachweise**

- theor. Nutzungsdauer Winden
- wiederkehrende Prüfungen

Test certificate  
- Theor. service life of drums  
- Periodic inspections  
Certificat d'essais  
- Longévité théor. des treuils  
- Inspections périodiques

Page:

Page:

**Prüfberichte**Test reports  
Rapports d'essais**Blatt: 57**Page:  
Page:**Technische Änderungen**Technical modifications  
Modifications techniques**Blatt: 58**Page:  
Page:**Kundenspezifische Zertifikate**

Beinhaltet auch Seil- u. UFL Zertifikate

Specific certificates for customers  
Also with certificates for ropes and hook blocks

**Blatt: 59**

Page:

Page:

Certificats spécifiques pour clients  
Ci-joint les certificats des cables et moufles

**TEREX®**

# Spezifikation Fahrzeugkran

Specification Mobile crane  
Spécification Grue mobile

**Typ:** CC 2800-1Type:  
Type:**Baunummer:** 62387Serial No:  
N° de séries:**Hersteller:** Terex-Demag GmbHManufacturer:  
Constructeur:**Kran-Benennung (ISO 4306/2):** RaupenkranDesignation of crane: Crawler crane  
Description: Grue sur chenilles**Kran-Verwendung (ISO 4301/1):** MontagekranApplication of crane: Erection crane  
Utilisation: Grue de montage**Kraneinstufung (ISO 4301):** A1 U1 Q2Classification of crane:  
Classification de la grue:**Höchstzul. Tragfähigkeit:** 600t bei 6m AusladungMax. perm. load: at m radius  
Charge max. admissible: à m de portée**Unterwagen**Carrier  
Porteur

<b>Art:</b>	<b>Raupen:</b> <input checked="" type="checkbox"/>	<b>Auto:</b> <input type="checkbox"/>	<b>Mobil:</b> <input type="checkbox"/>
Model:	Crawler	Truck crane:	Self-Propelled:
Type:	Grue sur chenilles:	Grue routière:	Automotrice:

**Jahr der ersten Inbetriebnahme:** 2012 **Typ:** ---Year of initial commissioning:  
Année de première mise en service: T  
Type:  
Type:**Fahrzeugidentifizierungsnummer:** ---Chassis No.:  
N° d'identification:**Anzahl der Achsen:** --- **Fahrgeschwindigkeit:** min 0 km/h **Verf. vom:** OWNumber of axles:  
Nombre d'essieux:  
Travel speed:  
Vitesse de translation:  
Travel motions from  
Conduite à partir du:

max 1,2 km/h

min  
max**Auto- / Mobilkran:** **Bereifung:** --- **max Radl. bei Kranbetrieb:** ---Truck-crane/Self propelled wheel-mtd. crane:  
Grue sur porteur/grue automotrice:  
Tyres  
Pneumatiques:  
Max. wheel load during crane operation:  
Charge max. sur roue (grue en charge):**Abstützung:** **Stützbasis:** **Länge:** --- **Breite:** ---Outriggers:  
Stabilisateurs:  
Outrigger base  
Base d'appui  
Length:  
Longueur:  
Width:  
Largeur:**max. Stützlast:** ---Max. outrigger loading:  
Charge max. sur stabilisateur:**Raupenkran:** **Spurbreite:** 8400 mmCrawler crane:  
Grue sur chenilles:  
Track:  
Voie:

Datum: 22.05.2012

Date:  
Date:

Note	Configuration (RZ)	Counterweight		Superlift			MB- -Pos.	Jib- Length [m]	Jib- Offset	English			
		CW [t]	CB [t]	MR / CWR [m] / [m]	SL-CW [t]	SL-Type				Chart- Number	Index	Pages	
SSL+LF2		180 t	60 t	11,5 / 11,0	0-300	Std.-SL	-	12 - 36	20°	253 717 12		1-27	
		160 t	0 t	11,5 / 11,0	0-300	Std.-SL	-	12 - 36	20°	253 718 12		1-27	
		180 t	60 t	13,5 / 13,0	0-300	Std.-SL	-	12 - 36	20°	253 721 12		1-27	
		160 t	0 t	13,5 / 13,0	0-300	Std.-SL	-	12 - 36	20°	253 722 12		1-27	
		180 t	60 t	15,5 / 15,0	0-300	Std.-SL	-	12 - 36	20°	253 725 12		1-27	
		160 t	0 t	15,5 / 15,0	0-300	Std.-SL	-	12 - 36	20°	253 726 12		1-27	
		180 t	60 t	15,0 / 15,0	0-300	Tele-SL	-	12 - 36	20°	253 729 12		1-27	
		160 t	0 t	15,0 / 15,0	0-300	Tele-SL	-	12 - 36	20°	253 730 12		1-27	
		180 t	60 t	15,0 / 13,0	0-300	Tele-SL	-	12 - 36	20°	253 733 12		1-27	
		160 t	0 t	15,0 / 13,0	0-300	Tele-SL	-	12 - 36	20°	253 734 12		1-27	
		180 t	60 t	15,0 / 17,0	0-300	Tele-SL	-	12 - 36	20°	253 737 12		1-27	
		160 t	0 t	15,0 / 17,0	0-300	Tele-SL	-	12 - 36	20°	253 738 12		1-27	
		180 t	60 t	11,5 / 11,0	0-300	Std.-SL	-	24 - 36	30°	254 910 12		1-18	
		160 t	0 t	11,5 / 11,0	0-300	Std.-SL	-	24 - 36	30°	254 911 12		1-18	
		180 t	60 t	13,5 / 13,0	0-300	Std.-SL	-	24 - 36	30°	254 914 12		1-18	
		160 t	0 t	13,5 / 13,0	0-300	Std.-SL	-	24 - 36	30°	254 915 12		1-18	
		180 t	60 t	15,5 / 15,0	0-300	Std.-SL	-	24 - 36	30°	254 918 12		1-18	
		160 t	0 t	15,5 / 15,0	0-300	Std.-SL	-	24 - 36	30°	254 919 12		1-18	
		180 t	60 t	15,0 / 15,0	0-300	Tele-SL	-	24 - 36	30°	254 922 12		1-18	
		160 t	0 t	15,0 / 15,0	0-300	Tele-SL	-	24 - 36	30°	254 923 12		1-18	
		180 t	60 t	15,0 / 13,0	0-300	Tele-SL	-	24 - 36	30°	254 926 12		1-18	
		160 t	0 t	15,0 / 13,0	0-300	Tele-SL	-	24 - 36	30°	254 927 12		1-18	
		180 t	60 t	15,0 / 17,0	0-300	Tele-SL	-	24 - 36	30°	254 930 12		1-18	
		160 t	0 t	15,0 / 17,0	0-300	Tele-SL	-	24 - 36	30°	254 931 12		1-18	
	SSL/LSL+LF2		180 t	60 t	11,5 / 11,0	0-300	Std.-SL	-	12 - 36	10°	253 741 12		1-27
			160 t	0 t	11,5 / 11,0	0-300	Std.-SL	-	12 - 36	10°	253 742 12		1-27
			180 t	60 t	13,5 / 13,0	0-300	Std.-SL	-	12 - 36	10°	253 745 12		1-27
			160 t	0 t	13,5 / 13,0	0-300	Std.-SL	-	12 - 36	10°	253 746 12		1-27
			180 t	60 t	15,5 / 15,0	0-300	Std.-SL	-	12 - 36	10°	253 749 12		1-27
			160 t	0 t	15,5 / 15,0	0-300	Std.-SL	-	12 - 36	10°	253 750 12		1-27
			180 t	60 t	15,0 / 15,0	0-300	Tele-SL	-	12 - 36	10°	253 753 12		1-27
			160 t	0 t	15,0 / 15,0	0-300	Tele-SL	-	12 - 36	10°	253 754 12		1-27
			180 t	60 t	15,0 / 13,0	0-300	Tele-SL	-	12 - 36	10°	253 757 12		1-27
			160 t	0 t	15,0 / 13,0	0-300	Tele-SL	-	12 - 36	10°	253 758 12		1-27
			180 t	60 t	15,0 / 17,0	0-300	Tele-SL	-	12 - 36	10°	253 761 12		1-27
			160 t	0 t	15,0 / 17,0	0-300	Tele-SL	-	12 - 36	10°	253 762 12		1-27
		180 t	60 t	11,5 / 11,0	0-300	Std.-SL	-	12 m	15°	253 765 12		1-9	
		160 t	0 t	11,5 / 11,0	0-300	Std.-SL	-	12 m	15°	253 766 12		1-9	
		180 t	60 t	13,5 / 13,0	0-300	Std.-SL	-	12 m	15°	253 769 12		1-9	
		160 t	0 t	13,5 / 13,0	0-300	Std.-SL	-	12 m	15°	253 770 12		1-9	
		180 t	60 t	15,5 / 15,0	0-300	Std.-SL	-	12 m	15°	253 773 12		1-9	
		160 t	0 t	15,5 / 15,0	0-300	Std.-SL	-	12 m	15°	253 774 12		1-9	
		180 t	60 t	15,0 / 15,0	0-300	Tele-SL	-	12 m	15°	253 777 12		1-9	
		160 t	0 t	15,0 / 15,0	0-300	Tele-SL	-	12 m	15°	253 778 12		1-9	
		180 t	60 t	15,0 / 13,0	0-300	Tele-SL	-	12 m	15°	253 781 12		1-9	
		160 t	0 t	15,0 / 13,0	0-300	Tele-SL	-	12 m	15°	253 782 12		1-9	
		180 t	60 t	15,0 / 17,0	0-300	Tele-SL	-	12 m	15°	253 785 12		1-9	
		160 t	0 t	15,0 / 17,0	0-300	Tele-SL	-	12 m	15°	253 786 12		1-9	
		180 t	60 t	11,5 / 11,0	0-300	Std.-SL	-	12 - 36	20°	253 789 12		1-27	
		160 t	0 t	11,5 / 11,0	0-300	Std.-SL	-	12 - 36	20°	253 790 12		1-27	
		180 t	60 t	13,5 / 13,0	0-300	Std.-SL	-	12 - 36	20°	253 793 12		1-27	
		160 t	0 t	13,5 / 13,0	0-300	Std.-SL	-	12 - 36	20°	253 794 12		1-27	
		180 t	60 t	15,5 / 15,0	0-300	Std.-SL	-	12 - 36	20°	253 797 12		1-27	
		160 t	0 t	15,5 / 15,0	0-300	Std.-SL	-	12 - 36	20°	253 798 12		1-27	
		180 t	60 t	15,0 / 15,0	0-300	Tele-SL	-	12 - 36	20°	253 801 12		1-27	
		160 t	0 t	15,0 / 15,0	0-300	Tele-SL	-	12 - 36	20°	253 802 12		1-27	
		180 t	60 t	15,0 / 13,0	0-300	Tele-SL	-	12 - 36	20°	253 805 12		1-27	
		160 t	0 t	15,0 / 13,0	0-300	Tele-SL	-	12 - 36	20°	253 806 12		1-27	
		180 t	60 t	15,0 / 17,0	0-300	Tele-SL	-	12 - 36	20°	253 809 12		1-27	
		160 t	0 t	15,0 / 17,0	0-300	Tele-SL	-	12 - 36	20°	253 810 12		1-27	







**TEREX®**

# Spezifikation Fahrzeugkran

Specification Mobile crane

Spécification Grue mobile

**Typ:** CC 2800-1

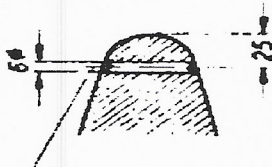
Type:

Type:

**Bau-Nr.:** 62387

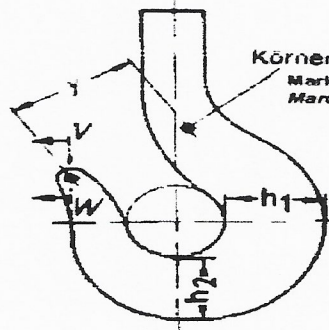
Serial No.:

N° de série:

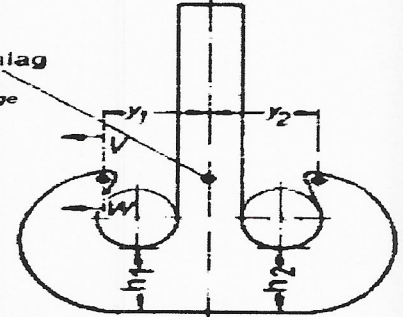
**Lasthaken**Load hook  
CrochetSchnitt V--W  
Section  
Section

Stift aus nichtrostendem Stahl

DIN 15401

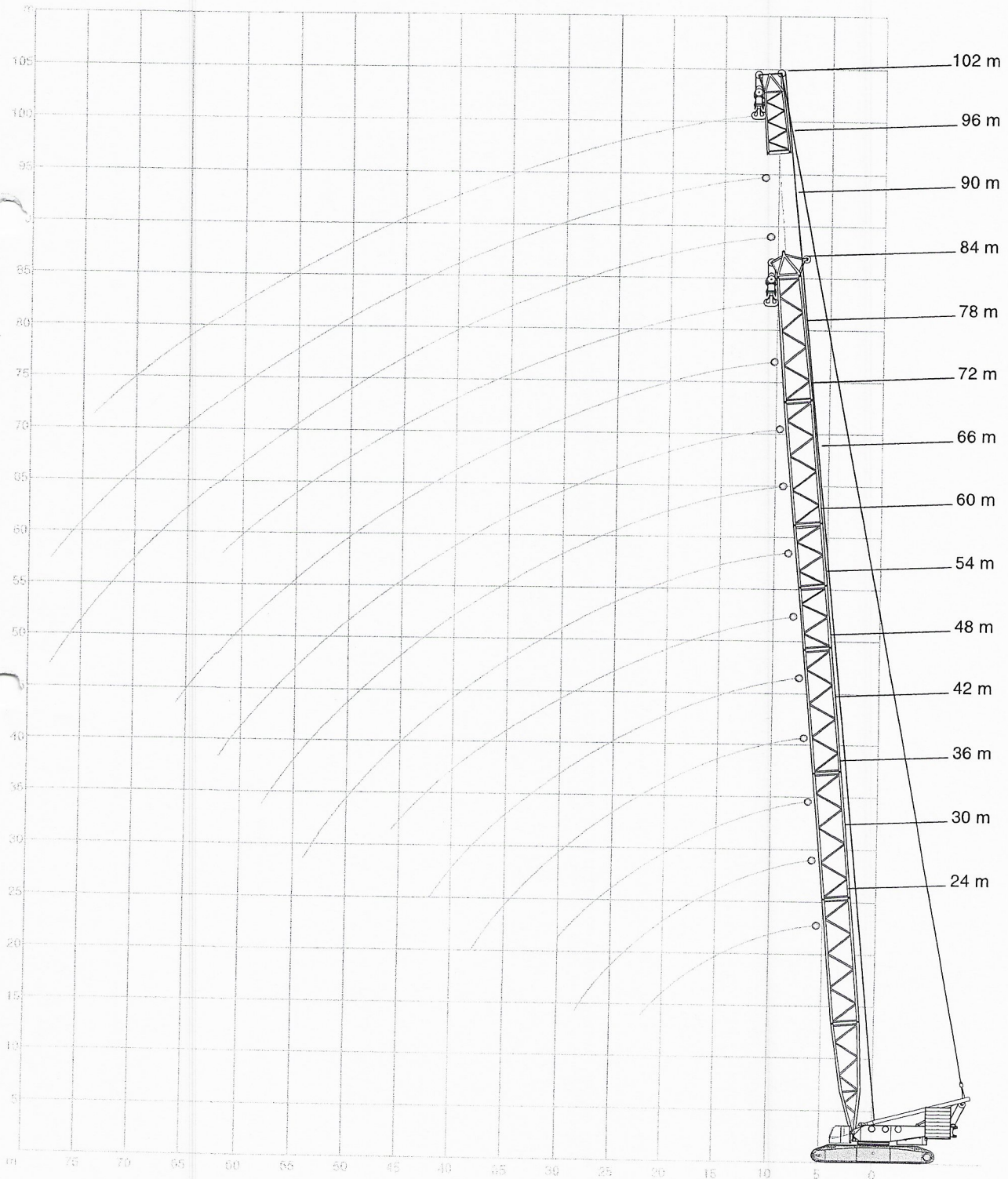
Körnerschlag  
Marking  
Marquage

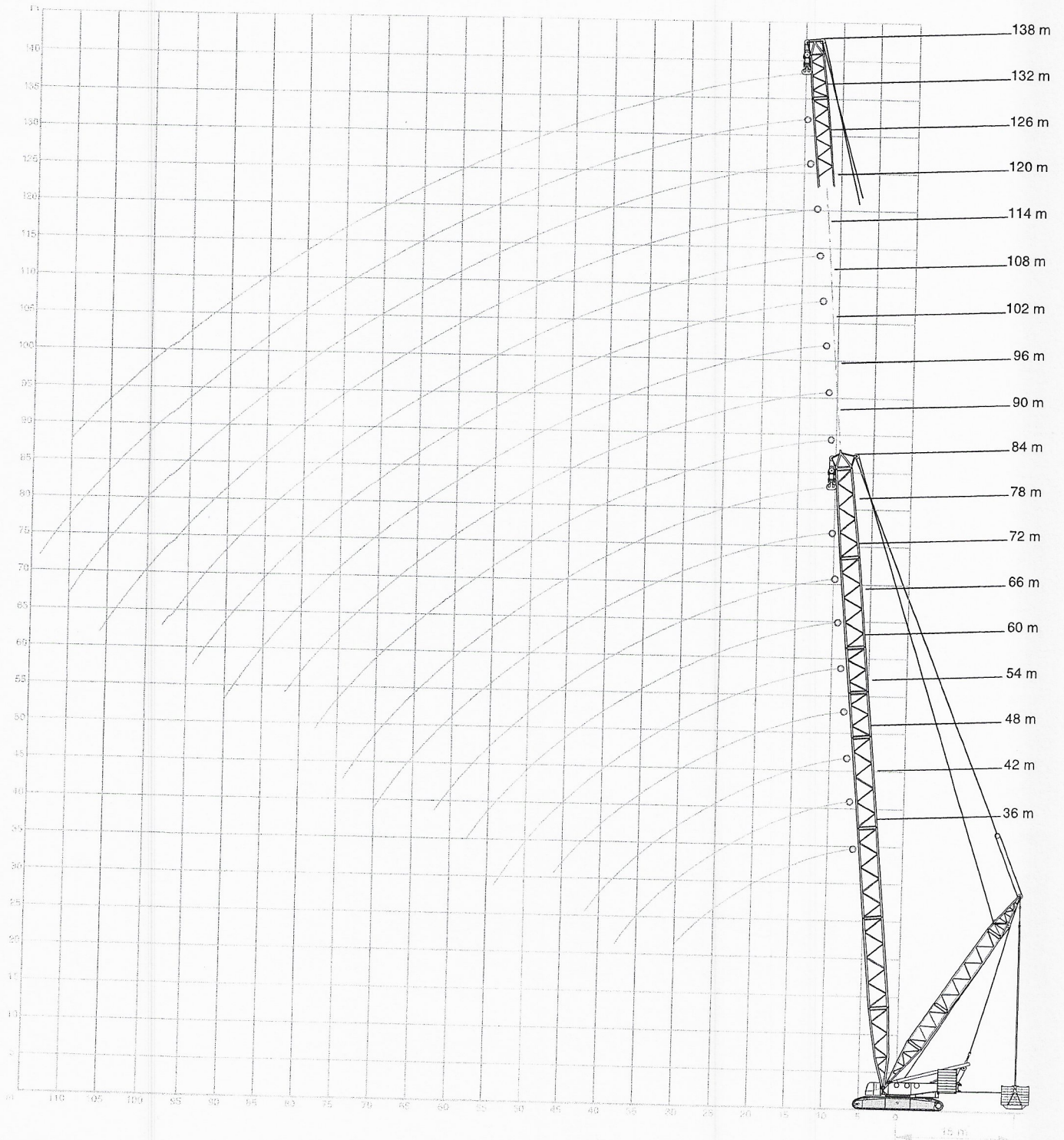
DIN 15402



Typ	Kennzeichnung	Y1	Y2	h1	h2	Tragfähigkeit in t bei Triebwerksgruppe
Type	Marking					Loading capacity in t in mechanism group
Type	Marquage					Capacité de charge au groupe de mécanisme
HG 15-0/28-E	H34396/9-0645-427 R6 DIN 15401	130	---	100	85	15 / IBm
Ufl 50-1/28-E	H35165/H0553-9 R12 DIN 15401	180	---	---	---	50 / IBm
Ufl 110-3/28-D	H33326/E9668-3 R25 DIN 15402	210	---	---	---	110 / IBm
Ufl 160-5/28-D	H35540/H0316-2 R32 DIN 15402	245	---	---	---	160 / IBm
Ufl 400-14/28-D	-----	---	---	---	---	-----
Ufl 600-22/28-D	H34348/E9579 R125 DIN 15402	460	460	360	355	600 / IBm
Drallfänger	34564-4	---	---	---	---	17 / IBm
Drallfänger	34564-5	---	---	---	---	17 / IBm
Drallfänger	34564-6	---	---	---	---	17 / IBm
Drallfänger	31818-7	---	---	---	---	17 / IBm



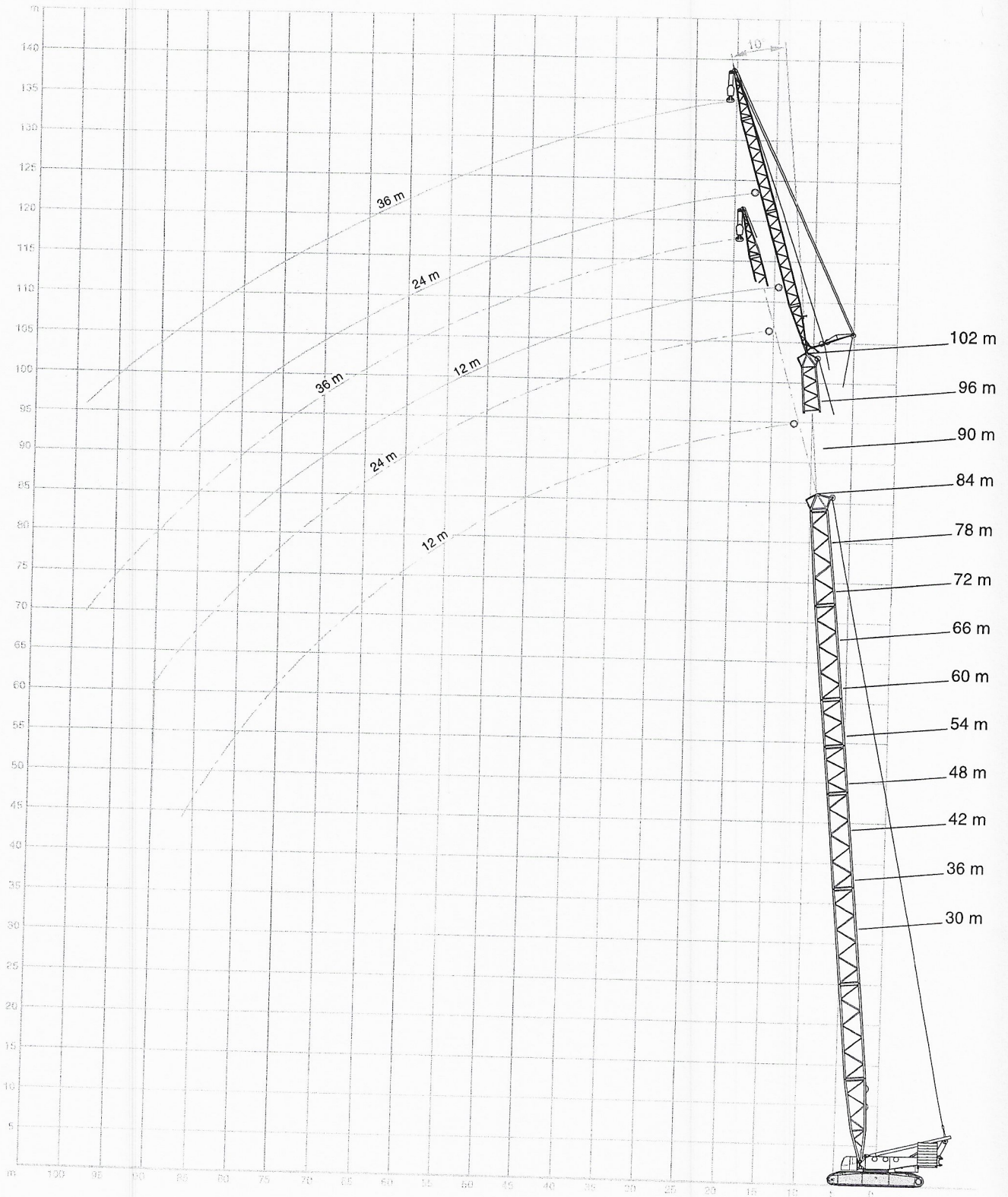




# SH+LF2, SH/LH+LF2

10°

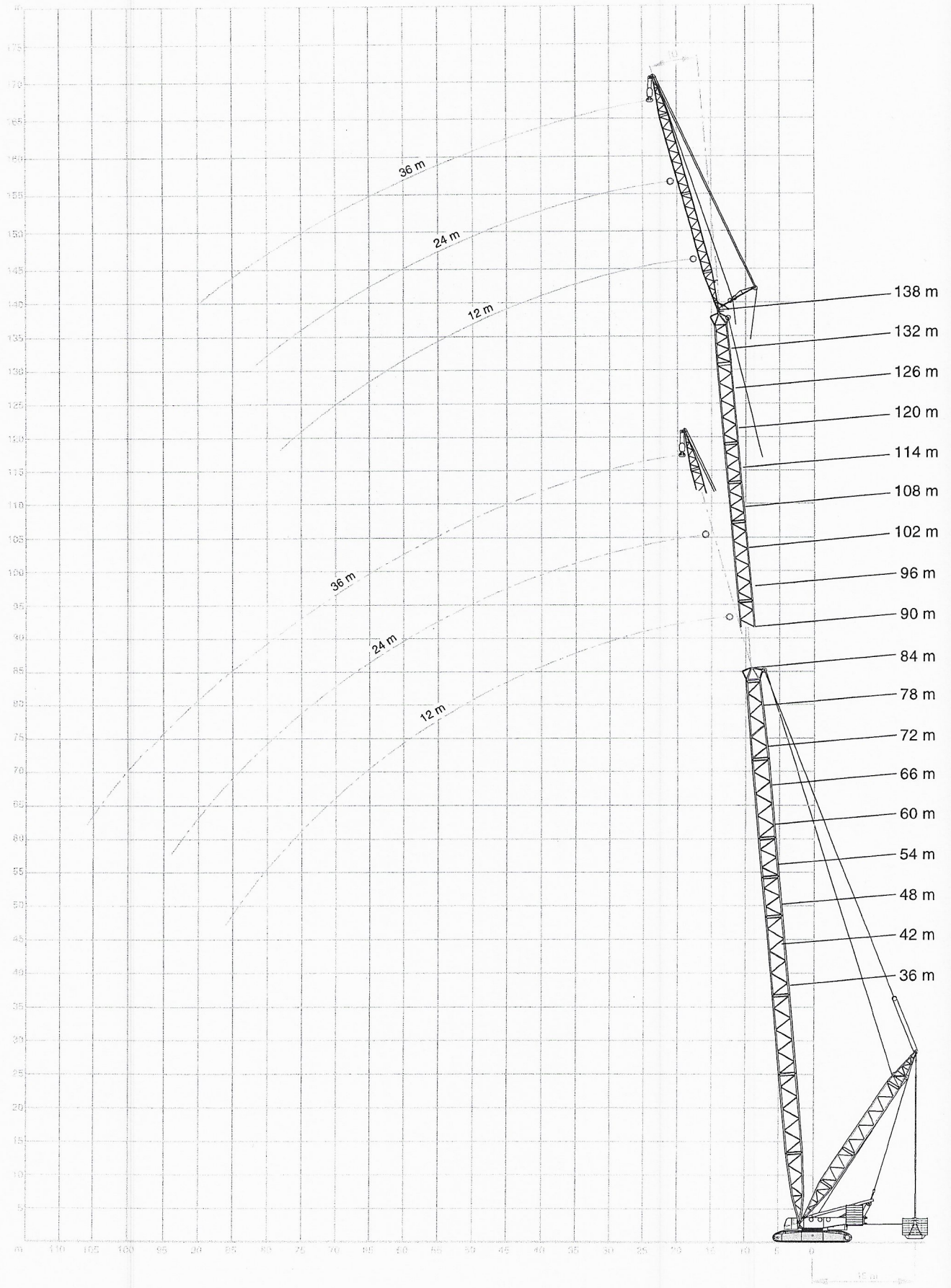
CC 2800-1



# SSL+LF2, SSL/LSL+LF2

10°

CC 2800-1



Datum: 22.05.2012

Date:  
Date:



# Spezifikation Tragfähigkeitstabellen

Der Kran CC 2800-1, Bau-Nr. 62387 ist mit folgenden Tragfähigkeitstabellen freigegeben:

Bemerkung	Konfiguration (RZ)	Gegengewicht		Superlift			HA- -Pos.	SP- Länge [m]	SP- Offset	Deutsch		
		GG [t]	ZB [t]	MR / GGR [m] / [m]	SL-GG [t]	SL-Typ				Tabellen- Nummer	Index	Seiten
	RG0	0	0 t	-	-	-	-	-	-	167 500 12		1
	SMAB1	0	0 t	-	-	-	-	-	-	167 496 12		1
	SMAB2	0	0 t	-	-	-	-	-	-	167 497 12		1
	SH	alle	0 t	-	-	-	-	-	-	167 250 12		1-10
		alle	60 t	-	-	-	-	-	-	167 251 12		1-4
	SH/LH	alle	0 t	-	-	-	-	-	-	167 252 12 _1		1-13
		alle	60 t	-	-	-	-	-	-	167 253 12 _1		1-4
*	SW	160 t	0 t	-	-	-	85°	24 - 84	-	167 254 12		1-14
		180 t	60 t	-	-	-	85°	24 - 84	-	167 255 12		1-14
		160 t	60 t	-	-	-	85°	24 - 84	-	167 256 12		1-14
		160 t	0 t	-	-	-	75°	24 - 84	-	167 257 12		1-13
		180 t	60 t	-	-	-	75°	24 - 84	-	167 258 12		1-14
		160 t	60 t	-	-	-	75°	24 - 84	-	167 259 12		1-14
		160 t	0 t	-	-	-	65°	24 - 78	-	167 260 12		1-8
		180 t	60 t	-	-	-	65°	24 - 84	-	167 261 12		1-10
		160 t	60 t	-	-	-	65°	24 - 84	-	167 262 12		1-10
		160 t	0 t	11,5 / 11,0	0-300	Std.-SL	-	-	-	167 263 12		1-9
		180 t	60 t	11,5 / 11,0	0-300	Std.-SL	-	-	-	167 264 12		1-9
		160 t	0 t	13,5 / 13,0	0-300	Std.-SL	-	-	-	167 265 12		1-9
180 t	60 t	13,5 / 13,0	0-300	Std.-SL	-	-	-	167 266 12		1-9		
160 t	0 t	15,5 / 15,0	0-300	Std.-SL	-	-	-	167 267 12		1-9		
180 t	60 t	15,5 / 15,0	0-300	Std.-SL	-	-	-	167 268 12		1-9		
160 t	0 t	15,0 / 15,0	0-300	Tele-SL	-	-	-	167 269 12		1-9		
180 t	60 t	15,0 / 15,0	0-300	Tele-SL	-	-	-	167 270 12		1-9		
160 t	0 t	15,0 / 13,0	0-300	Tele-SL	-	-	-	167 271 12		1-9		
180 t	60 t	15,0 / 13,0	0-300	Tele-SL	-	-	-	167 272 12		1-9		
160 t	0 t	15,0 / 17,0	0-300	Tele-SL	-	-	-	167 273 12		1-9		
180 t	60 t	15,0 / 17,0	0-300	Tele-SL	-	-	-	167 274 12		1-9		
140 t	0 t	11,5 / 11,0	0-300	Std.-SL	-	-	-	253 591 12		1-9		
120 t	0 t	11,5 / 11,0	0-300	Std.-SL	-	-	-	253 592 12		1-9		
140 t	0 t	13,5 / 13,0	0-300	Std.-SL	-	-	-	253 593 12		1-9		
120 t	0 t	13,5 / 13,0	0-300	Std.-SL	-	-	-	253 594 12		1-9		
140 t	0 t	15,5 / 15,0	0-300	Std.-SL	-	-	-	253 595 12		1-9		
120 t	0 t	15,5 / 15,0	0-300	Std.-SL	-	-	-	253 596 12		1-9		
140 t	0 t	15,0 / 15,0	0-300	Tele-SL	-	-	-	253 597 12		1-9		
120 t	0 t	15,0 / 15,0	0-300	Tele-SL	-	-	-	253 598 12		1-9		
140 t	0 t	15,0 / 13,0	0-300	Tele-SL	-	-	-	253 599 12		1-9		
120 t	0 t	15,0 / 13,0	0-300	Tele-SL	-	-	-	253 600 12		1-9		
140 t	0 t	15,0 / 17,0	0-300	Tele-SL	-	-	-	253 601 12		1-9		
120 t	0 t	15,0 / 17,0	0-300	Tele-SL	-	-	-	253 602 12		1-9		
	SSL/LSL	160 t	0 t	11,5 / 11,0	0-300	Std.-SL	-	-	-	167 275 12 _1		1-18
		180 t	60 t	11,5 / 11,0	0-300	Std.-SL	-	-	-	167 276 12 _1		1-18
		160 t	0 t	13,5 / 13,0	0-300	Std.-SL	-	-	-	167 277 12 _1		1-18
		180 t	60 t	13,5 / 13,0	0-300	Std.-SL	-	-	-	167 278 12 _1		1-18
		160 t	0 t	15,5 / 15,0	0-300	Std.-SL	-	-	-	167 279 12 _1		1-18
		180 t	60 t	15,5 / 15,0	0-300	Std.-SL	-	-	-	167 280 12 _1		1-18
		160 t	0 t	15,0 / 15,0	0-300	Tele-SL	-	-	-	167 281 12 _1		1-18
		180 t	60 t	15,0 / 15,0	0-300	Tele-SL	-	-	-	167 282 12 _1		1-18
		160 t	0 t	15,0 / 13,0	0-300	Tele-SL	-	-	-	167 283 12 _1		1-18
		180 t	60 t	15,0 / 13,0	0-300	Tele-SL	-	-	-	167 284 12 _1		1-18
		160 t	0 t	15,0 / 17,0	0-300	Tele-SL	-	-	-	167 285 12 _1		1-18
		180 t	60 t	15,0 / 17,0	0-300	Tele-SL	-	-	-	167 286 12 _1		1-18

Datum: 22.05.2012

Date:  
Date:



Bemerkung	Gegengewicht		Superlift			HA- -Pos.	SP- Länge [m]	SP- Offset	Deutsch			
	GG [t]	ZB [t]	MR / GGR [m] / [m]	SL-GG [t]	SL-Typ				Tabellen- Nummer	Index	Seiten	
SSL/LSL	140 t	0 t	11,5 / 11,0	0-300	Std.-SL	-	-	-				
	120 t	0 t	11,5 / 11,0	0-300	Std.-SL	-	-	-	253 603 12	_1	1-18	
	140 t	0 t	13,5 / 13,0	0-300	Std.-SL	-	-	-	253 604 12	_1	1-18	
	120 t	0 t	13,5 / 13,0	0-300	Std.-SL	-	-	-	253 605 12	_1	1-18	
	140 t	0 t	15,5 / 15,0	0-300	Std.-SL	-	-	-	253 606 12	_1	1-18	
	120 t	0 t	15,5 / 15,0	0-300	Std.-SL	-	-	-	253 607 12	_1	1-18	
	140 t	0 t	15,0 / 15,0	0-300	Tele-SL	-	-	-	253 608 12	_1	1-18	
	120 t	0 t	15,0 / 15,0	0-300	Tele-SL	-	-	-	253 609 12	_1	1-18	
	140 t	0 t	15,0 / 13,0	0-300	Tele-SL	-	-	-	253 610 12	_1	1-18	
	120 t	0 t	15,0 / 13,0	0-300	Tele-SL	-	-	-	253 611 12	_1	1-18	
	140 t	0 t	15,0 / 17,0	0-300	Tele-SL	-	-	-	253 612 12	_1	1-18	
	120 t	0 t	15,0 / 17,0	0-300	Tele-SL	-	-	-	253 613 12	_1	1-18	
									253 614 12	_1	1-18	
	* SFSL	160 t	0 t	11,5 / 11,0	0-300	Std.-SL	-	24 - 96	15°	167 287 12		1-114
180 t		60 t	11,5 / 11,0	0	Std.-SL	-	24 - 96	15°	167 288 12		1-18	
160 t		0 t	13,5 / 13,0	0-300	Std.-SL	-	24 - 96	15°	167 289 12		1-114	
180 t		60 t	13,5 / 13,0	0	Std.-SL	-	24 - 96	15°	167 290 12		1-18	
160 t		0 t	15,5 / 15,0	0-300	Std.-SL	-	24 - 96	15°	167 291 12		1-114	
180 t		60 t	15,5 / 15,0	0	Std.-SL	-	24 - 96	15°	167 292 12		1-18	
160 t		0 t	15,0 / 15,0	0-300	Tele-SL	-	24 - 96	15°	167 293 12		1-114	
180 t		60 t	15,0 / 15,0	0	Tele-SL	-	24 - 96	15°	167 294 12		1-18	
160 t		0 t	15,0 / 13,0	0-300	Tele-SL	-	24 - 96	15°	167 295 12		1-114	
180 t		60 t	15,0 / 13,0	0	Tele-SL	-	24 - 96	15°	167 296 12		1-18	
160 t		0 t	15,0 / 17,0	0-300	Tele-SL	-	24 - 96	15°	167 297 12		1-114	
180 t		60 t	15,0 / 17,0	0	Tele-SL	-	24 - 96	15°	167 298 12		1-18	
* SWSL		160 t	0 t	11,5 / 11,0	0-300	Std.-SL	85°	24 - 96	-	167 307 12		1-114
		180 t	60 t	11,5 / 11,0	0	Std.-SL	85°	24 - 96	-	167 308 12		1-18
	160 t	0 t	13,5 / 13,0	0-300	Std.-SL	85°	24 - 96	-	167 309 12		1-114	
	180 t	60 t	13,5 / 13,0	0	Std.-SL	85°	24 - 96	-	167 310 12		1-18	
	160 t	0 t	15,5 / 15,0	0-300	Std.-SL	85°	24 - 96	-	167 311 12		1-114	
	180 t	60 t	15,5 / 15,0	0	Std.-SL	85°	24 - 96	-	167 312 12		1-18	
	160 t	0 t	15,0 / 15,0	0-300	Tele-SL	85°	24 - 96	-	167 313 12		1-114	
	180 t	60 t	15,0 / 15,0	0	Tele-SL	85°	24 - 96	-	167 314 12		1-18	
	160 t	0 t	15,0 / 13,0	0-300	Tele-SL	85°	24 - 96	-	167 315 12		1-114	
	180 t	60 t	15,0 / 13,0	0	Tele-SL	85°	24 - 96	-	167 316 12		1-18	
	160 t	0 t	15,0 / 17,0	0-300	Tele-SL	85°	24 - 96	-	167 317 12		1-114	
	180 t	60 t	15,0 / 17,0	0	Tele-SL	85°	24 - 96	-	167 318 12		1-18	
	160 t	0 t	11,5 / 11,0	0-300	Std.-SL	75°	24 - 96	-	167 319 12		1-114	
	180 t	60 t	11,5 / 11,0	0	Std.-SL	75°	24 - 96	-	167 320 12		1-18	
	160 t	0 t	13,5 / 13,0	0-300	Std.-SL	75°	24 - 96	-	167 321 12		1-114	
	180 t	60 t	13,5 / 13,0	0	Std.-SL	75°	24 - 96	-	167 322 12		1-18	
	160 t	0 t	15,5 / 15,0	0-300	Std.-SL	75°	24 - 96	-	167 323 12		1-114	
	180 t	60 t	15,5 / 15,0	0	Std.-SL	75°	24 - 96	-	167 324 12		1-18	
	160 t	0 t	15,0 / 15,0	0-300	Tele-SL	75°	24 - 96	-	167 325 12		1-114	
	180 t	60 t	15,0 / 15,0	0	Tele-SL	75°	24 - 96	-	167 326 12		1-18	
	160 t	0 t	15,0 / 13,0	0-300	Tele-SL	75°	24 - 96	-	167 327 12		1-114	
	180 t	60 t	15,0 / 13,0	0	Tele-SL	75°	24 - 96	-	167 328 12		1-18	
	160 t	0 t	15,0 / 17,0	0-300	Tele-SL	75°	24 - 96	-	167 329 12		1-114	
	180 t	60 t	15,0 / 17,0	0	Tele-SL	75°	24 - 96	-	167 330 12		1-18	
	160 t	0 t	11,5 / 11,0	0-300	Std.-SL	65°	24 - 96	-	167 331 12		1-114	
	180 t	60 t	11,5 / 11,0	0	Std.-SL	65°	24 - 96	-	167 332 12		1-11	
	160 t	0 t	13,5 / 13,0	0-300	Std.-SL	65°	24 - 96	-	167 333 12		1-114	
	180 t	60 t	13,5 / 13,0	0	Std.-SL	65°	24 - 96	-	167 334 12		1-11	
	160 t	0 t	15,5 / 15,0	0-300	Std.-SL	65°	24 - 96	-	167 335 12		1-114	
	180 t	60 t	15,5 / 15,0	0	Std.-SL	65°	24 - 96	-	167 336 12		1-11	
	160 t	0 t	15,0 / 15,0	0-300	Tele-SL	65°	24 - 96	-	167 337 12		1-114	
	180 t	60 t	15,0 / 15,0	0	Tele-SL	65°	24 - 96	-	167 338 12		1-11	
	160 t	0 t	15,0 / 13,0	0-300	Tele-SL	65°	24 - 96	-	167 339 12		1-114	
	180 t	60 t	15,0 / 13,0	0	Tele-SL	65°	24 - 96	-	167 340 12		1-11	
	160 t	0 t	15,0 / 17,0	0-300	Tele-SL	65°	24 - 96	-	167 341 12		1-114	
	180 t	60 t	15,0 / 17,0	0	Tele-SL	65°	24 - 96	-	167 342 12		1-11	



Bemerkung	Konfiguration (RZ)	Gegengewicht		Superlift			HA- -Pos.	SP- Länge [m]	SP- Offset	Deutsch				
		GG [t]	ZB [t]	MR / GGR [m] / [m]	SL-GG [t]	SL-Typ				Tabellen- Nummer	Index	Seiten		
* * * * * * * * * * * * * * * *	SWSL	160 t	0 t	11,5 / 11,0	0-300	Std.-SL	55°	24 - 96	-	167 343 12		1-111		
		180 t	60 t	11,5 / 11,0	0	Std.-SL	55°	24 - 72	-	167 344 12		1-7		
		160 t	0 t	13,5 / 13,0	0-300	Std.-SL	55°	24 - 96	-	167 345 12		1-111		
		180 t	60 t	13,5 / 13,0	0	Std.-SL	55°	24 - 72	-	167 346 12		1-7		
		160 t	0 t	15,5 / 15,0	0-300	Std.-SL	55°	24 - 96	-	167 347 12		1-111		
		180 t	60 t	15,5 / 15,0	0	Std.-SL	55°	24 - 72	-	167 348 12		1-7		
		160 t	0 t	15,0 / 15,0	0-300	Tele-SL	55°	24 - 96	-	167 349 12		1-111		
		180 t	60 t	15,0 / 15,0	0	Tele-SL	55°	24 - 72	-	167 350 12		1-7		
		160 t	0 t	15,0 / 13,0	0-300	Tele-SL	55°	24 - 96	-	167 351 12		1-111		
		180 t	60 t	15,0 / 13,0	0	Tele-SL	55°	24 - 72	-	167 352 12		1-7		
		160 t	0 t	15,0 / 17,0	0-300	Tele-SL	55°	24 - 96	-	167 353 12		1-111		
		180 t	60 t	15,0 / 17,0	0	Tele-SL	55°	24 - 72	-	167 354 12		1-7		
		* * * *	LFVL	beide		15,5 / 15,0	0-300	Std.-SL	-	12 m	17,5°	221 397 12		1-16
				beide		15,0 / 15,0	0-300	Tele-SL	-	12 m	17,5°	221 398 12		1-16
				beide		15,0 / 13,0	0-300	Tele-SL	-	12 m	17,5°	221 399 12		1-16
				beide		15,0 / 17,0	0-300	Tele-SL	-	12 m	17,5°	221 400 12		1-16
* * * * * * * *	SFVL	beide		15,5 / 15,0	0-300	Std.-SL	-	12 m	13°	167 299 12		1-16		
		beide		15,0 / 15,0	0-300	Tele-SL	-	12 m	13°	167 300 12		1-16		
		beide		15,0 / 13,0	0-300	Tele-SL	-	12 m	13°	167 301 12		1-16		
		beide		15,0 / 17,0	0-300	Tele-SL	-	12 m	13°	167 302 12		1-16		
		beide		15,5 / 15,0	0-300	Std.-SL	-	12 m	20°	167 303 12		1-16		
		beide		15,0 / 15,0	0-300	Tele-SL	-	12 m	20°	167 304 12		1-16		
		beide		15,0 / 13,0	0-300	Tele-SL	-	12 m	20°	167 305 12		1-16		
		beide		15,0 / 17,0	0-300	Tele-SL	-	12 m	20°	167 306 12		1-16		
SH+LF2		alle		-	-	-	-	12 - 36	10°	253 663 12		1-30		
		alle		-	-	-	-	12 m	15°	253 664 12		1-10		
		alle		-	-	-	-	12 - 36	20°	253 665 12		1-30		
		alle		-	-	-	-	24 - 36	30°	254 766 12		1-20		
SH/LH+LF2		alle		-	-	-	-	12 - 36	10°	253 666 12		1-21		
		alle		-	-	-	-	12 m	15°	253 667 12		1-7		
		alle		-	-	-	-	12 - 36	20°	253 668 12		1-21		
		alle		-	-	-	-	24 - 36	30°	254 767 12		1-14		
SSL+LF2		180 t	60 t	11,5 / 11,0	0-300	Std.-SL	-	12 - 36	10°	253 669 12		1-27		
		160 t	0 t	11,5 / 11,0	0-300	Std.-SL	-	12 - 36	10°	253 670 12		1-27		
		180 t	60 t	13,5 / 13,0	0-300	Std.-SL	-	12 - 36	10°	253 673 12		1-27		
		160 t	0 t	13,5 / 13,0	0-300	Std.-SL	-	12 - 36	10°	253 674 12		1-27		
		180 t	60 t	15,5 / 15,0	0-300	Std.-SL	-	12 - 36	10°	253 677 12		1-27		
		160 t	0 t	15,5 / 15,0	0-300	Std.-SL	-	12 - 36	10°	253 678 12		1-27		
		180 t	60 t	15,0 / 15,0	0-300	Tele-SL	-	12 - 36	10°	253 681 12		1-27		
		160 t	0 t	15,0 / 15,0	0-300	Tele-SL	-	12 - 36	10°	253 682 12		1-27		
		180 t	60 t	15,0 / 13,0	0-300	Tele-SL	-	12 - 36	10°	253 685 12		1-27		
		160 t	0 t	15,0 / 13,0	0-300	Tele-SL	-	12 - 36	10°	253 686 12		1-27		
		180 t	60 t	15,0 / 17,0	0-300	Tele-SL	-	12 - 36	10°	253 689 12		1-27		
		160 t	0 t	15,0 / 17,0	0-300	Tele-SL	-	12 - 36	10°	253 690 12		1-27		
		180 t	60 t	11,5 / 11,0	0-300	Std.-SL	-	12 m	15°	253 693 12		1-9		
		160 t	0 t	11,5 / 11,0	0-300	Std.-SL	-	12 m	15°	253 694 12		1-9		
		180 t	60 t	13,5 / 13,0	0-300	Std.-SL	-	12 m	15°	253 697 12		1-9		
		160 t	0 t	13,5 / 13,0	0-300	Std.-SL	-	12 m	15°	253 698 12		1-9		
		180 t	60 t	15,5 / 15,0	0-300	Std.-SL	-	12 m	15°	253 701 12		1-9		
		160 t	0 t	15,5 / 15,0	0-300	Std.-SL	-	12 m	15°	253 702 12		1-9		
		180 t	60 t	15,0 / 15,0	0-300	Tele-SL	-	12 m	15°	253 705 12		1-9		
		160 t	0 t	15,0 / 15,0	0-300	Tele-SL	-	12 m	15°	253 706 12		1-9		
		180 t	60 t	15,0 / 13,0	0-300	Tele-SL	-	12 m	15°	253 709 12		1-9		
		160 t	0 t	15,0 / 13,0	0-300	Tele-SL	-	12 m	15°	253 710 12		1-9		
		180 t	60 t	15,0 / 17,0	0-300	Tele-SL	-	12 m	15°	253 713 12		1-9		
		160 t	0 t	15,0 / 17,0	0-300	Tele-SL	-	12 m	15°	253 714 12		1-9		